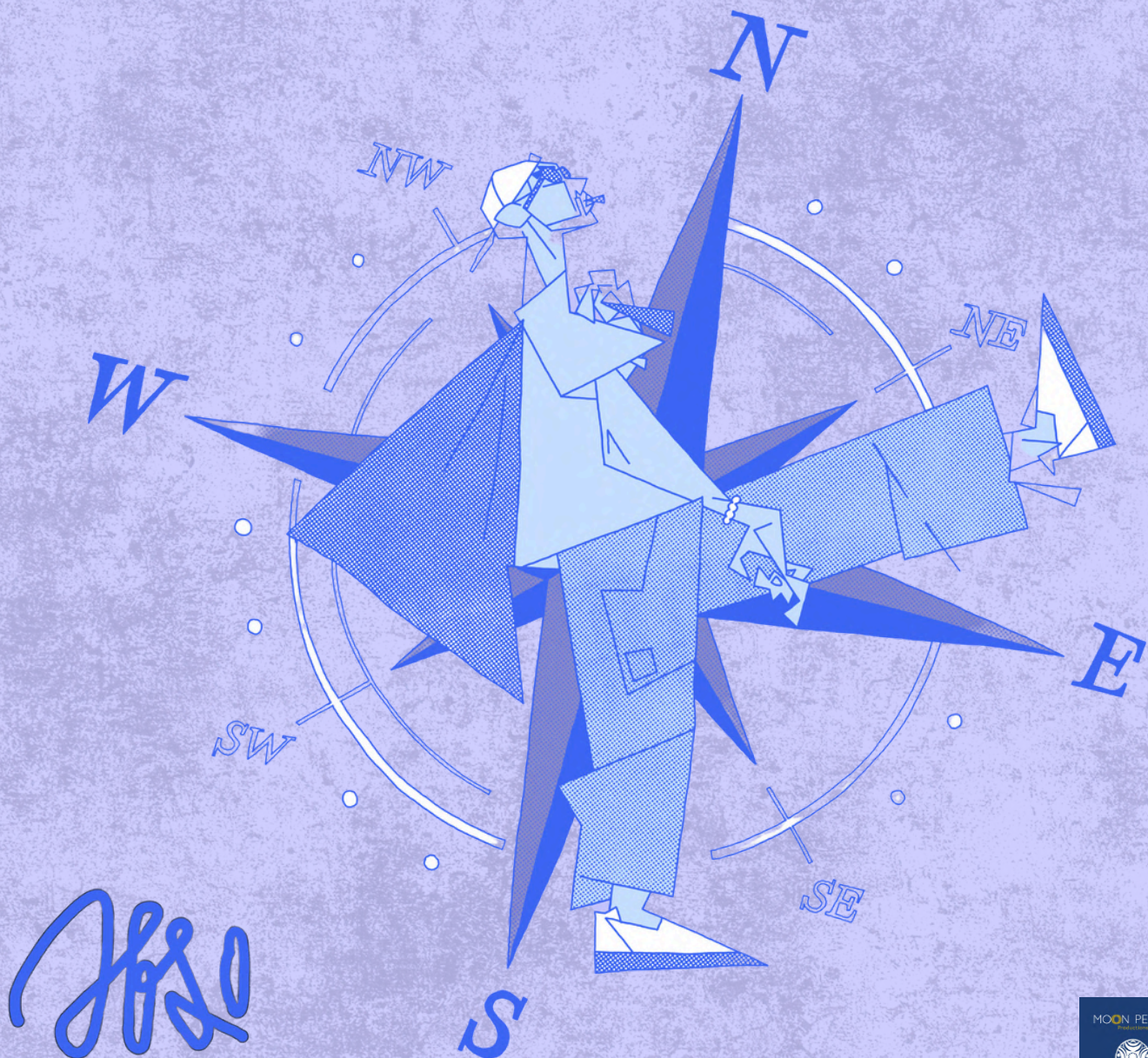


Rider DJ Set

YOU WILL BE HOSTING BETWEEN 2 AND 4 PEOPLE, TO BE DETERMINED ON EACH DATE WITH THE MANAGER.

**ABSO : VOCALS
LUDO : DJ**

**MANAGEMENT :
JULIE RUDELIN / 06.82.79.47.16
moonpearlproduction@gmail.com**



ABSO

Loge - catering - Accommodation

LOGE :

PLEASE PROVIDE A LOCKABLE ROOM EQUIPPED WITH AN INTERNET CONNECTION, ACCESSIBLE AS SOON AS THE ARTISTS ARRIVE.

PLEASE PROVIDE :

**RACKS/MIRRORS
1 TABLE/4 CHAIRS
4 BOTTLES OF WATER FOR THE STAGE**

CATERING

**FOR LUNCH AND DINNER, PLEASE PROVIDE QUALITY MEALS.
NO FOOD ALLERGIES**

**5 LITRES OF WATER
1 BOTTLE OF RUM
12 BEERS
COFFEE, SUGAR, HONEY,
SWEETS SUCH AS CANDIES AND CHOCOLATE BARS**

**PLEASE DO NOT FORGET GLASSES, CUPS, CUTLERY, PLATES AND BOTTLE-
OPENER.**

ACCOMMODATION :

HOTEL CLOSE TO THE SITE, MINIMUM 2 STARS, INCLUDING BREAKFAST.

ACCESS-INVIT-MERCH- TECH-STAGE

ACCESS :

**PROVIDE ACCESS TO THE SITE AND A SECURE CAR PARK.
PROVIDE TWO HANDLERS ON ARRIVAL TO SET UP AND DISMANTLE THE STAGE.**

INVIT-MERCH :

**THE ORGANISER WILL PROVIDE THE BAND WITH 5 INVITATIONS AND 2
BACKSTAGE PASSES.
PROVIDE A LIT TABLE NEAR THE ENTRANCE TO THE VENUE, AVAILABLE AFTER
THE CONCERT FOR MERCHANDISING.**

TECH :

**WE DO NOT HAVE A RETURN TECHNICIAN
PLEASE ALLOW A MINIMUM OF 30 MINUTES FOR SET-UP AND SOUND CHECK.
THE SET LASTS 60 MINUTES.**

STAGE :

**THE STAGE MUST BE 10M X 8M
THE STAGE MUST BE COMPLETELY FLAT AND STABLE, WITH A PERFECTLY
SMOOTH FLOOR THAT IS NOT DISJOINTED
IT MUST BE ABLE TO SUPPORT A MINIMUM WEIGHT OF 500KG PER SQUARE
METRE
FOR OUTDOOR PERFORMANCES, THE STAGE MUST BE COVERED.**

TECHNICAL DATA

THE SYSTEM WILL BE INSTALLED IN WORKING ORDER WHEN THE UNIT ARRIVES.
THE FRONT WILL BE EQUIPPED WITH A 2X31 BAND EQ, AS WELL AS EACH RETURN
CIRCUIT.

PLEASE PROVIDE A QUALITY CONSOLE
ANALOGUE: MIDAS HÉRITAGE, XL3 OR EQUIVALENT
DIGITAL: SOUNDCRAFT VI, YAMAHA CL, DLIVE, MIDAS PRO

THE STAGE WILL BE EQUIPPED WITH 6 WEDGES (4 MINI) DISTRIBUTED ON TWO AUX
CIRCUITS SUCH AS :

1 AUX STEREO DJ
1 AUX MONO LEAD SIDES WELCOME.

PLEASE PROVIDE A 2X1M STAND AT 80CM HIGH FOR THE DJ.
IF YOU WISH TO USE YOUR OWN HF MICROPHONES, THE ONLY REFERENCE
ACCEPTED WILL BE THE SHURE ULXD CAPSULE BETA 58.

<i>Patch</i>	<i>Instruments</i>	<i>Mics</i>
1	Dj Left	DI
2	DJ Right	DI
3	Backs DJ	SM 58
4	LEAD Abso	Beta 58
5	Spare/Guest	Beta 58
6	Talkback	SM 58
7-8	Fx Return	

